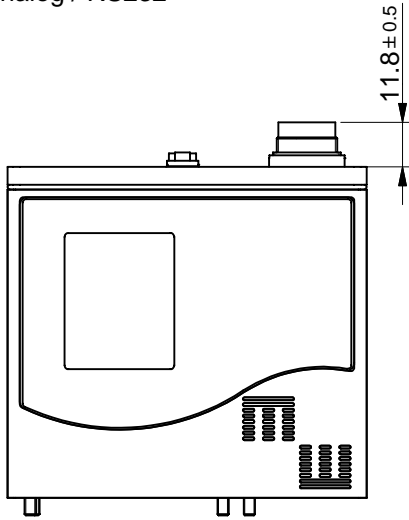
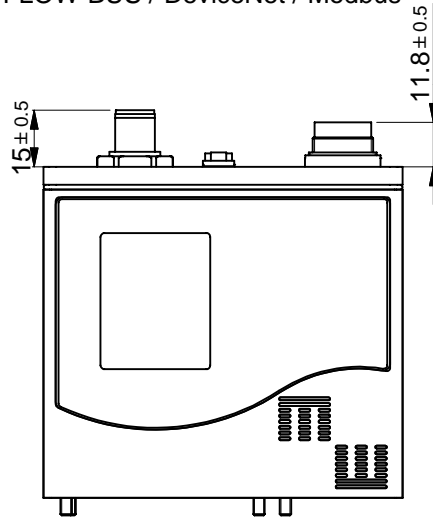


One of these digital case assemblies replaces the case assembly as drawn in the dimensional drawing. Please note that the height increases when a connector is used.

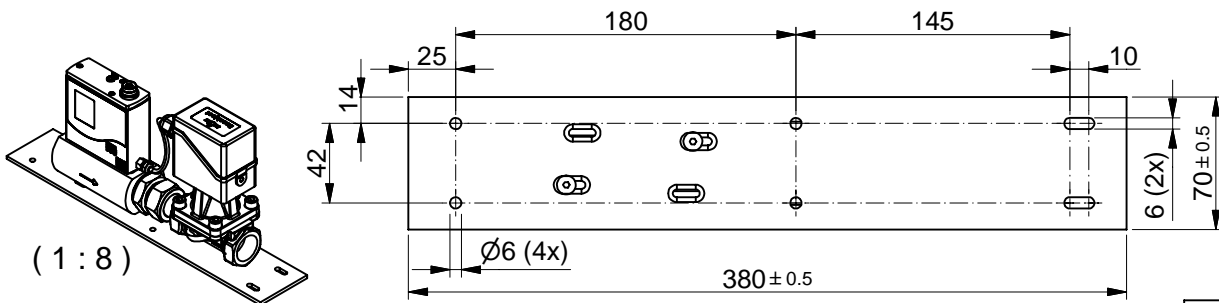
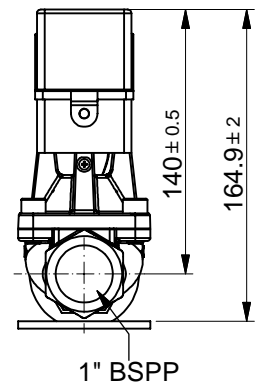
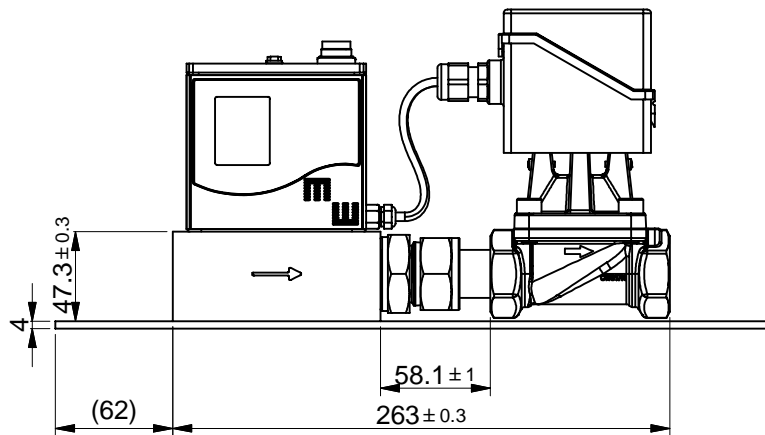
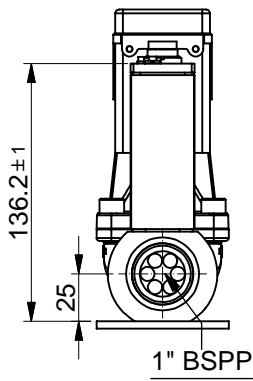
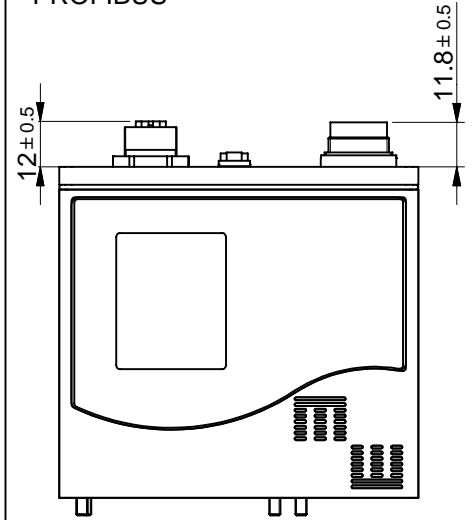
analog / RS232



FLOW-BUS / DeviceNet / Modbus


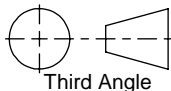


PROFIBUS



Dimensions subject to change without notice.

Tolerances ± 0.2 unless otherwise mentioned

Title: Dimensional drawing M+W D-6373 / BJ 1"		Drawer : M.B. Date: 07-01-2010	Revision Description: PRELIMINARY Reducer removed. Adapter chamber changed. Dimension 55 and 170.1 changed.	
 WWW.MW-INSTRUMENTS.COM	Projection:  Third Angle	Checked : Date: 07-01-2010	Rev. by:	Scale: 1:4
	Dimensions: Metric (mm)	Drawing no.: 7.05.782	Rev.: B	A4 Page: 1-1